

FIVC Swing Check Valve

Grey Cast Iron – PN 16 – Bolted Bonnet – EN 1092-2



FCH series

Technical data

Main features and materials

- Body: Grey Cast Iron
- Bonnet: Grey Cast Iron
- Disc: Stainless Steel
- Hinge: Ductile Iron
- Plug: Zinc Galvanized 10S20 Grey Cast Iron
- USP: Compact settlement
Environment-friendly
Cost and maintenance efficient
- Dimensions: Face-to-Face acc. to EN 558 (series 48)
- Closing tightness: EN 16767

Field of applications

- Temperature range: -10 to 300 °C
- Max. working pressure: 16 bar

- Petrochemical industry
- Irrigation systems
- Mining and infrastructure industries
- Shipyard industry
- Compressed air
- Textile industry
- Mechanical industry
- Steam applications
- Other various industries

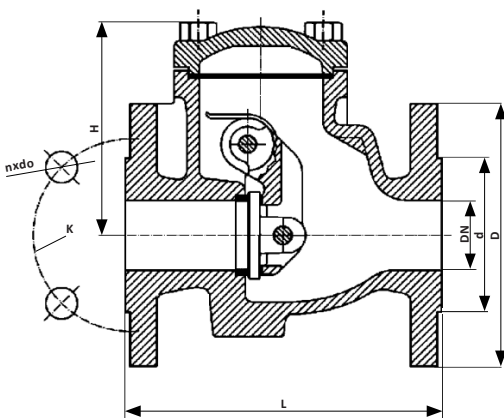
Description

FIVC Swing Check Valve is designed as a single-direction device, which eliminates the return of pressurized fluid. Since these valves function via the gravitational force that acts on the tilting disc, there is no universal guideline as to where these should be positioned.

Declaration

The product has been inspected and tested in accordance with the European PED Directive N° 2014/68/EU, Module H, dated 15/05/2014 and is CE marked.

Dimensions



Product Information

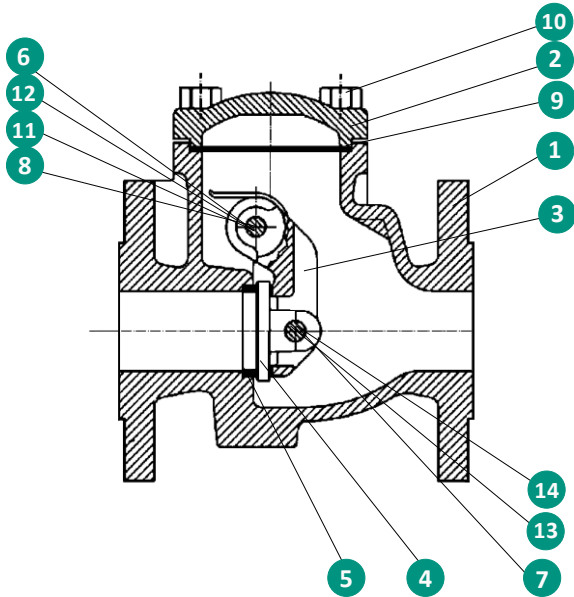
Product code	Size (DN)	L*	D*	d*	K*	nxdo*	H*	Kg
FCH065C16CB04	65	240	185	118	145	4x19	141	15.2
FCH080C16CB04	80	260	200	132	160	8x19	168	20.8
FCH100C16CB04	100	300	220	156	180	8x19	175	31.5
FCH125C16CB04	125	350	250	184	210	8x19	199	46
FCH150C16CB04	150	400	285	211	240	8x23	217	60
FCH200C16CB04	200	500	340	266	295	12x23	292	120
FCH250C16CB04	250	600	405	319	355	12x28	355	180
FCH300C16CB04	300	700	460	370	410	12x28	374	250

*Dimensions are in millimeters

FIVC Swing Check Valve

Grey Cast Iron – PN 16 – Bolted Bonnet – EN 1092-2

Product Specification



N°	Name	Material
1	Body	Grey Cast Iron EN-GJL-250 JL 1040
2	Cover	Grey Cast Iron EN-GJL-250 JL 1040
3	Hinge	Ductile Iron EN-GJS-500-7 JS 1050
4	Flap	Stainless Steel LH14 G-X20Cr14
5	Seat ring	Stainless Steel X12Cr13
6	Pin bearing	DN 200+: Brass
7	Flap pin	Stainless Steel X12Cr13 1.4021
8	Pin	A4 1.4571
9	Cover gasket	Graphite CrNi
10	Bolt	8.8 A2A
11	Plug	DN 40-150: Zinc Galvanized 10S20 DN 200: EN-GJL-250 JL1040
12	Plug gasket	Carbomide Rubber
13	Washer	Carbon Steel A2A
14	Split pin	Stainless Steel X5CrNi 18-10

Pressure-Temperature Ratings

